

5 YEARS WARRANTY

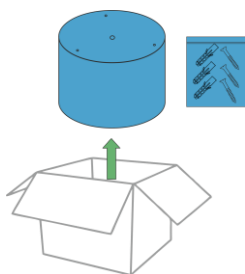
HERONLUX SM INSTALLATION GUIDE

IP20

READ THE INSTRUCTIONS CAREFULLY BEFORE STARTING



INSIDE THE BOX



1x Luminaire
3x Plugs
3x Screws

NEEDED FOR MOUNTING

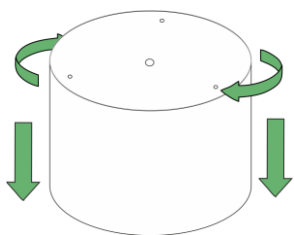


WARNING

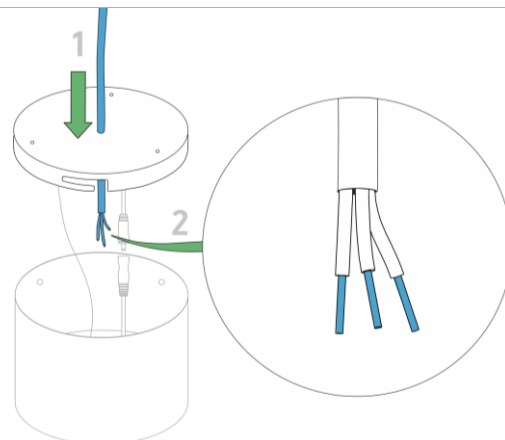
- Turn power off before inspection, installation or removal.
- Make sure that all electrical connections are made correctly before operating the device.
- Installation and start up should only be done by qualified personnel.
- Cable and luminaire components must be protected against mechanical impacts and damage.
- Do not operate luminaire with damaged parts.
- For indoor use only.
- Dry location only.
- To prevent wiring damage or abrasion, do not expose wiring to edges of sheet metal or other sharp objects.
- The manufacturer shall not be liable for any damage resulting from inappropriate modifications to the luminaire or faulty installation.

If you have any questions, contact the manufacturer.

INSTALLATION



1 Separate luminaire from back plate by twisting it.

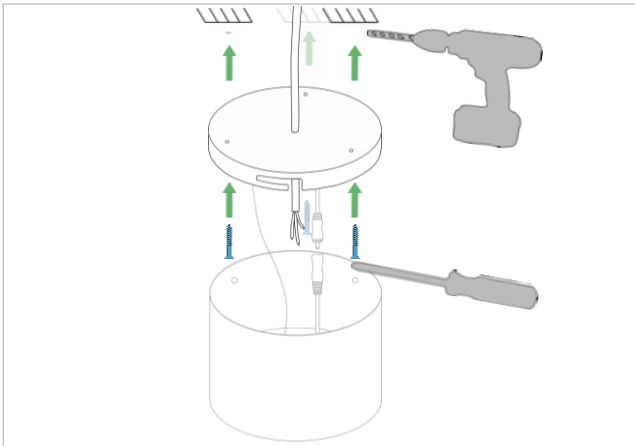


2 Bring power cable front of back plate by using hole in the middle. Strip the wires.

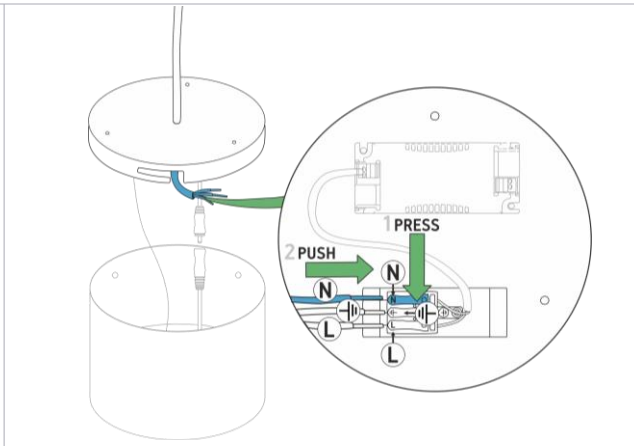
5 YEARS WARRANTY

HERONLUX SM INSTALLATION GUIDE

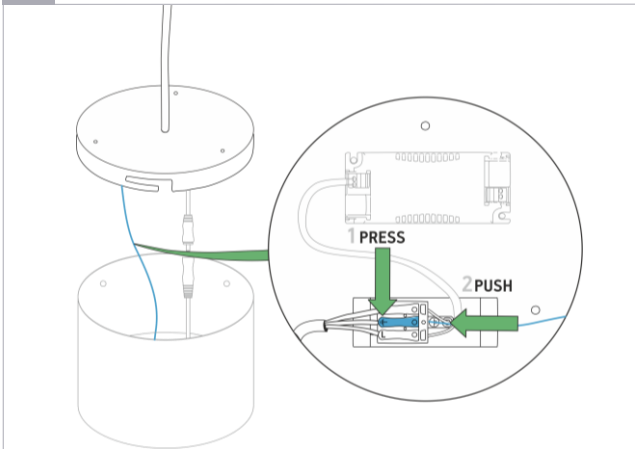
IP20



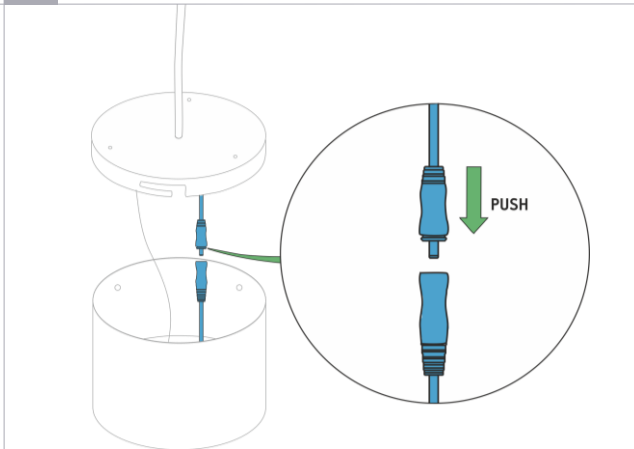
3 Fix the back plate onto the ceiling with 3 screws.



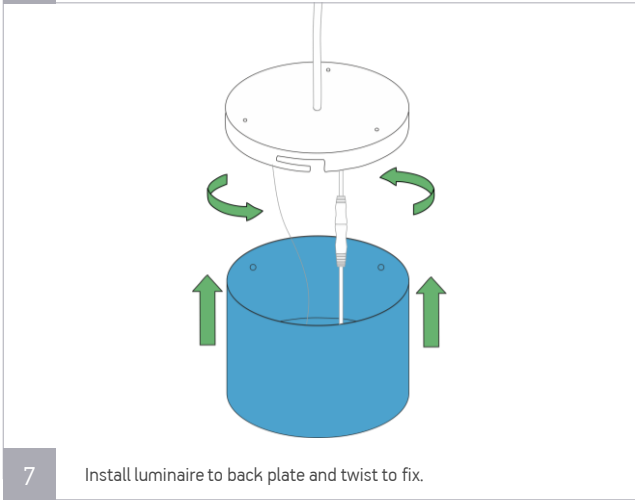
4 Connect power cable to grounded terminal block. Push each terminal's pin while putting in the wires to appropriate terminal block's line.



5 Fix secure wire to the ground hole at grounded terminal block.



6 Connect DC connector between driver and luminaire.



7 Install luminaire to back plate and twist to fix.