



## ITEM DESCRIPTION

With the new Pixel Holder for S0 modules we enable easy and fast installation of modules into pixel applications. Installation with the new holder saves up to 80% of time as you need no screws or tape to fix modules into sign. It is easy to step and straightforward process. The holder itself is made of flexible, durable material.

## APPLICATION

- Pixel signs
- Contour lighting
- Decoration lighting

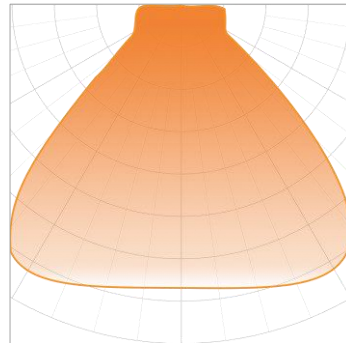
## FEATURES & BENEFITS

- Designed as an accessory for S0 series
- Saves up to 80% installation time
- Flexible material for safe installation
- Easy positioning during installation
- Can be installed with 100 mm step

## GENERAL SPECIFICATIONS

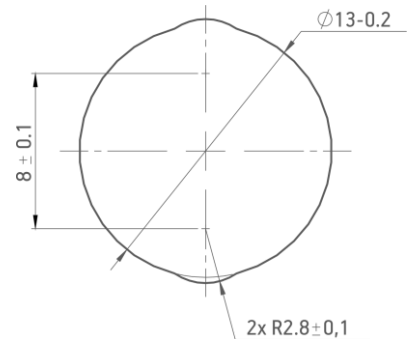
MATERIAL	PP (polypropylene)
COLOUR	Translucent
COMPATIBLE WITH	S0 series
BEAM ANGLE (WITH S0 SERIES)	105° (field angle 170°)
CC DISTANCE	40 - 100 mm
SHEET THICKNESS	3 mm
STORAGE CONDITIONS	0 °C ~ +30 °C (relative humidity <80%)
INSTALLATION TEMPERATURE	0 °C ~ +30 °C
AMBIENT WORKING TEMPERATURE	-30 °C ~ +60 °C
WEIGHT PER PCS	0.62 g
PACKAGE	100 pcs
WARRANTY	3 years

## LIGHT DISTRIBUTION GRAPH



Beam angle: 105°

## HOLE DIMENSIONS

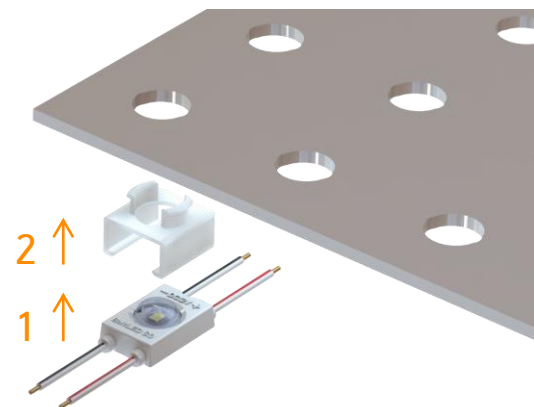


## ORDERING INFORMATION

SKU	PACKAGE	WEIGHT PER PCS.
BPH-S02PP-TR	100 pcs	0.62 g

## INSTALLATION

1. Click Crown OPTO S0 module into holder
2. Click module with the holder into sign from the back side.



© 2018, All rights reserved BaltLED, UAB. Specifications are subject to change without notice.